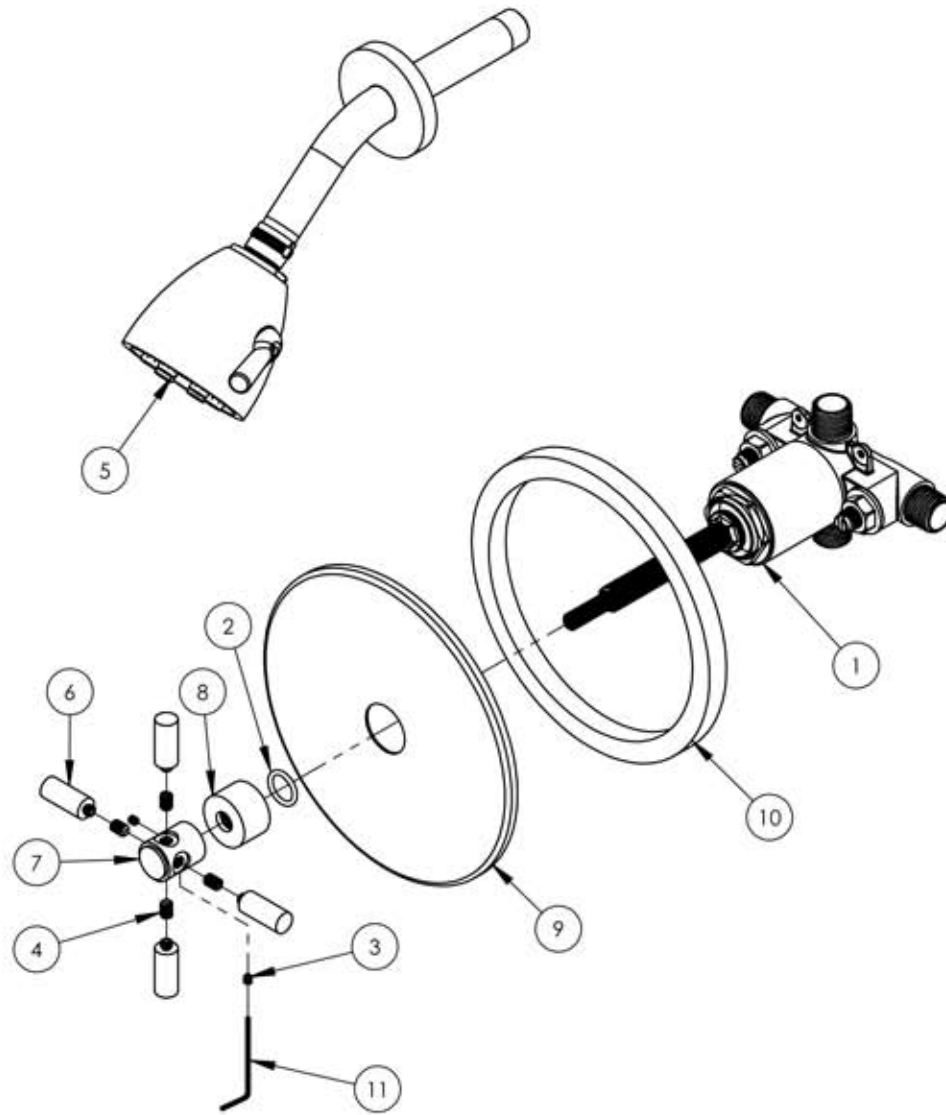


A

B

C

D



ITEM NO.	PART NUMBER	DESCRIPTION	QTY.
1	1-028	PRESSURE BALANCE, 1/2" VALVE WITH STOPS	1
	1-028	PRESSURE BALANCE, 1/2" VALVE WITH STOPS	1
	10591	BODY, PRESSURE BALANCE CYCLING	1
	10551	CARTRIDGE, PB B2B 180° REVERSE	1
	10634	SLEEVE, PB CYCLING	1
	10352	NUT, PRESSURE BALANCE VALVE	1
	2-075	SHUTOFF VALVE, PRESSURE BALANCE	2
	10822	CARTRIDGE BODY, SHUTOFF FOR PB VALVE	1
	10823	SCREW SEAL, SHUTOFF PB	1
	10824	PLUNGER SHAFT, SHUTOFF PB	1
	90011	O-RING, 5/16"ID X 7/16"OD X 1/16"THK, AS-568-011	2
	90509	GASKET, RUBBER WASHER	1
	90018	O-RING, 3/4"ID X 7/8"OD X 1/16"THK, AS-568-018	1
	92104	SPRING, .187" OD X .937"L X .012"WIRE DIA.	1
	10349	NUT CAP FOR 3WAY DIVERTER	1
	10209	SHANK, NIPPLE THREAD ALL 9/16"-20UN WITH .433"ID	1
	92015	SCREW, SOCKET HEAD CAP, M4 THRD, 16MM LENGTH	1
	10054	STEM EXTENSION, 20PT INT. TO 16PT LONG EXT. BROACH	1
	92157	SCREW, SMALL HD M4X0.7 - 1/2"L	1
2	90531	O-Ring, 5/8"ID x 13/16"OD x 3/32"Thk	1
3	92008	SET SCREW, CUP POINT 8-32UNC 3/16"L	2
4	92173	SET SCREW, CUP POINT, 1/4-20 X 3/8"L, STAINLESS STEEL	4

E

ZONE	REV.	DESCRIPTION	DATE	APPROVED
------	------	-------------	------	----------

REVISIONS

1261 LOGAN AVENUE
COSTA MESA, CALIFORNIA 92626
PHONE: 714.361.4800
FAX: 714.617.3120

PHYLORICH®

Defining Luxury Since 1959

PROPRIETARY AND CONFIDENTIAL

THE INFORMATION CONTAINED IN THIS DRAWING IS THE SOLE PROPERTY OF RSS MANUFACTURING. ANY REPRODUCTION IN PART OR AS A WHOLE WITHOUT THE WRITTEN PERMISSION OF RSS MANUFACTURING IS PROHIBITED.

-	-	INTERPRET GEOMETRIC DIMENSIONING & TOLERANCING IN ACCORDANCE WITH ASME Y14.5-2009 & ASME Y14.41-2003 STANDARDS, UNLESS OTHERWISE SPECIFIED. DIMENSIONS ARE IN INCHES. TOLERANCES ARE:	PB SHOWER SET TRIM, BASIC SERIES, TUBULAR CROSS HANDLE				
-	-						
NEXT ASSY	USED ON	FRACTIONS ±1/64"	DECIMALS X.X: ±.1 X.XX: ±.01 X.XXX: ±.005	ANGULAR ±.5°	SIZE	ASM/PRT NO.	REV
APPLICATION		MATERIAL	NAME	DATE	A	DPB3134/00	
FINISH		DRAWN	CA	10/1/2013	SCALE: 1:4	WEIGHT: lbs.	SHEET 1 OF 2
DO NOT SCALE DRAWING		CHECKED					

5

4

3

2

1